

# IRB-325

UL325-2018 INFRARED PHOTOEYE



## Applications

The IRB-325 is an external entrapment protection device type B1, non-contact sensor for use with automatic gates and doors. The device is UL325-2018 compliant with operators that require NC monitoring.

The long range and thru-beam features of the IRB-325 offer a reliable solution to all external entrapment protection needs. A robust, NEMA 4X enclosure provides the durability required for any safety application. The lens-less design minimizes fogging and false triggering caused by small objects and provides for easy alignment.

# IRB-325



scan here for more  
information



**EMX Industries, Inc.**

5660 Transportation Blvd, Garfield Heights, OH 44125

Phone: 800 426 9912

Sales Inquiries: [salesupport@emxinc.com](mailto:salesupport@emxinc.com)

Technical Support: [technical@emxinc.com](mailto:technical@emxinc.com)

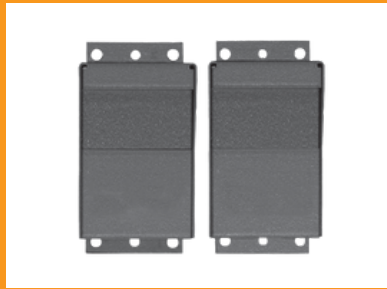
[www.emxinc.com](http://www.emxinc.com)



## Infrared Photoeye

- UL325-2018 compliant
- Monitored NC operation
- 65ft. operating range
- Compatible with many operators

### Accessories



IRB-325-HD



IRB-325-SP



IRB-325-PT

### Technical Data

<b>Operating range</b>	6 to 65 feet
<b>Power supply</b>	12 VDC to 24VAC/DC
<b>Current consumption</b>	12 VDC standby/detect, 24VAC/DC standby/detect
<b>Receiver</b>	33mA/25mA, 56mA/38mA
<b>Transmitter</b>	47mA
<b>Relay contact rating</b>	1A @ 30VDC
<b>Operating temperature</b>	-40°F...+170°F
<b>Housing material</b>	UL and CSA Type 4, NEMA 4X, 3, 3R, 12, 13
<b>Housing dimensions</b>	5.03" (128mm) x 3.06" (78mm) x 3.02" (77mm)
<b>Hood dimensions</b>	6.7" (170mm) x 3.3" (84mm) x 4.4" (112mm)

### Ordering Information

- IRB-325 Infrared photoeye, includes transmitter and receiver
- IRB-325-HD Set of two powder coated steel protective hoods
- IRB-325-SP Water tight strain relief for use with interconnecting cords
- IRB-325-PT Mounting post 2in x 2in x 2ft

WARRANTY EMX INC. the product described herein for a period of 2 years under normal use and service from the date of sale to our customer. The product will be free from defects in material and workmanship. This warranty does not cover ordinary wear and tear, abuse, misuse, overloading, altered products, or damage caused by the purchaser from incorrect connections, or lightning damage. There is no warranty of merchantability. There are no warranties expressed, implied or any affirmation of fact or representation which extend beyond the description set forth herein. EMX Inc. sole responsibility and liability, and purchaser's exclusive remedy shall be limited to the repair or replacement at EMX's option of a part or parts not so conforming to the warranty. In no event shall EMX Inc. be liable for damages of any nature, including incidental or consequential damages, including but, not limited to any damages resulting from non-conformity defect in material or workmanship. Rev 3 12/06/2022

